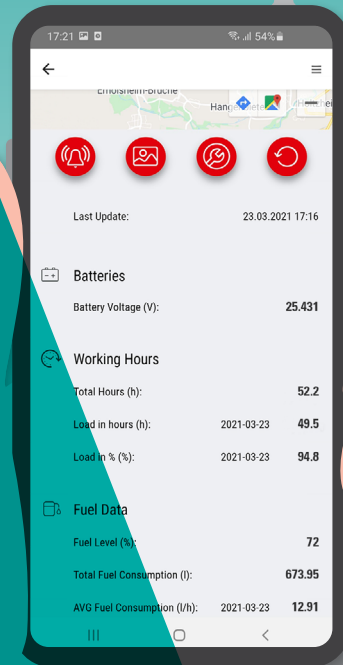
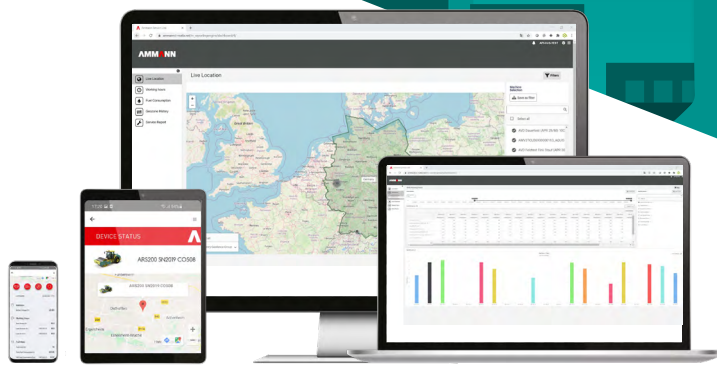


DELIVERING THE DATA THAT MATTERS

SERVICELINK

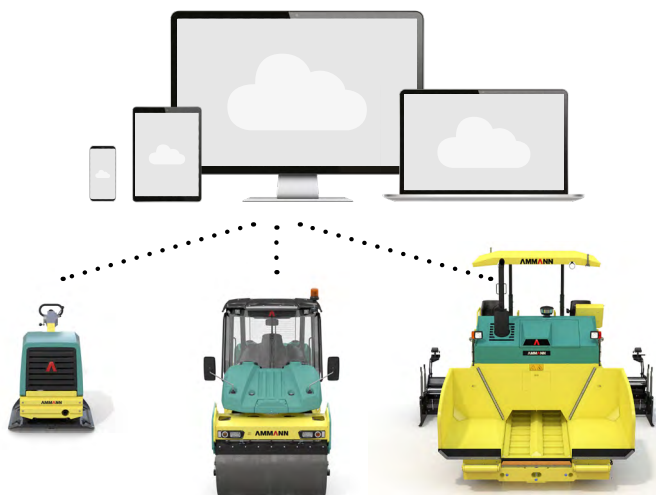


Ammann ServiceLink is a digital data management tool that provides customers with the information they want the most: machine location, battery status and hours. Data transfer is automatic thanks to new hardware, and access to the information is only a click away.

Manage your equipment – anytime, anywhere – with Ammann ServiceLink. This comprehensive fleet system provides key data for light compaction equipment, heavy compaction machines and asphalt pavers. You can choose which machines to track.

HIGHLIGHTS

- Supplies machine location, operating hours, battery status
- Requires no subscription fees for Light Equipment
- Provides one-click access to data
- Reliably transmits data from machines, no matter where they are
- Streamlines fleet upgrades (retrofit option)
- Easy to install



AMMANN

GIVING CUSTOMERS WHAT THEY REALLY NEED

We asked customers, “What is the information you really need? What data would have an impact on your business?”

Three key themes emerged. Customers want:

- Machine location
- Battery status
- Hours of usage



THE NEW GENERATION OF SERVICELINK PROVIDES THAT DATA & MUCH MORE

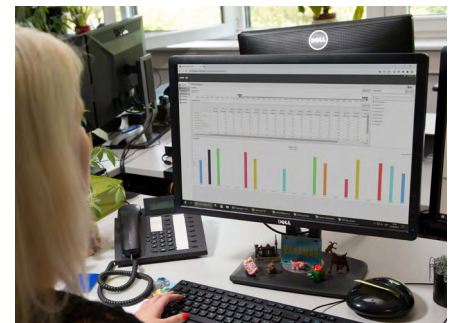
ServiceLink Features	Light Equipment	Light Tandem Rollers	Soil & Asphalt Compactors	Pavers
5-Year Data Subscription FOC	✓	✗	✗	✗
3-Year Data Subscription	✗	✓	✓	✓
Live Location	✓	✓	✓	✓
Machine Master Data	✓	✓	✓	✓
Daily Routes	✓	✓	✓	✓
Daily Working Hours	✓	✓	✓	✓
Monthly Working Hours	✓	✓	✓	✓
Geozone Working Hours	✓	✓	✓	✓
Daily Fuel Consumption	✗	✗	✓	Only models with CAN connection
Monthly Fuel Consumption	✗	✗	✓	Only models with CAN connection
Geozone History	✓	✓	✓	✓
Service Report	✓	✓	✓	✓
Push Alert Notifications for: - Battery voltage - Movement alarm	✓	✓	✓	✓

Knowing a machine’s **location** removes guesswork for the customer, particularly if multiple jobsites are being managed simultaneously.

The location data also makes logistics (pickups and deliveries) more efficient. This, too, can have a major impact on larger fleets and rental houses.

Customers also said **battery charge** information is crucial. Without that data, an operator can be sent to a remote jobsite – only to discover a dead battery. A great deal of time and ultimately money is wasted on such a trip.

Hours of usage are important for rental houses and their billing. The data also helps contractors double-check jobsite usage numbers.



DOWNLOAD THE MOBILE APP OR USE THE DESKTOP APPLICATION

- ServiceLink Mobile App
Manage your equipment – anytime and anywhere.
- ServiceLink Web Portal
Organize and manage multiple construction sites in the workplace.



App Store



Google Play

Go to MyAmmann.com for Ammann ServiceLink Web Portal